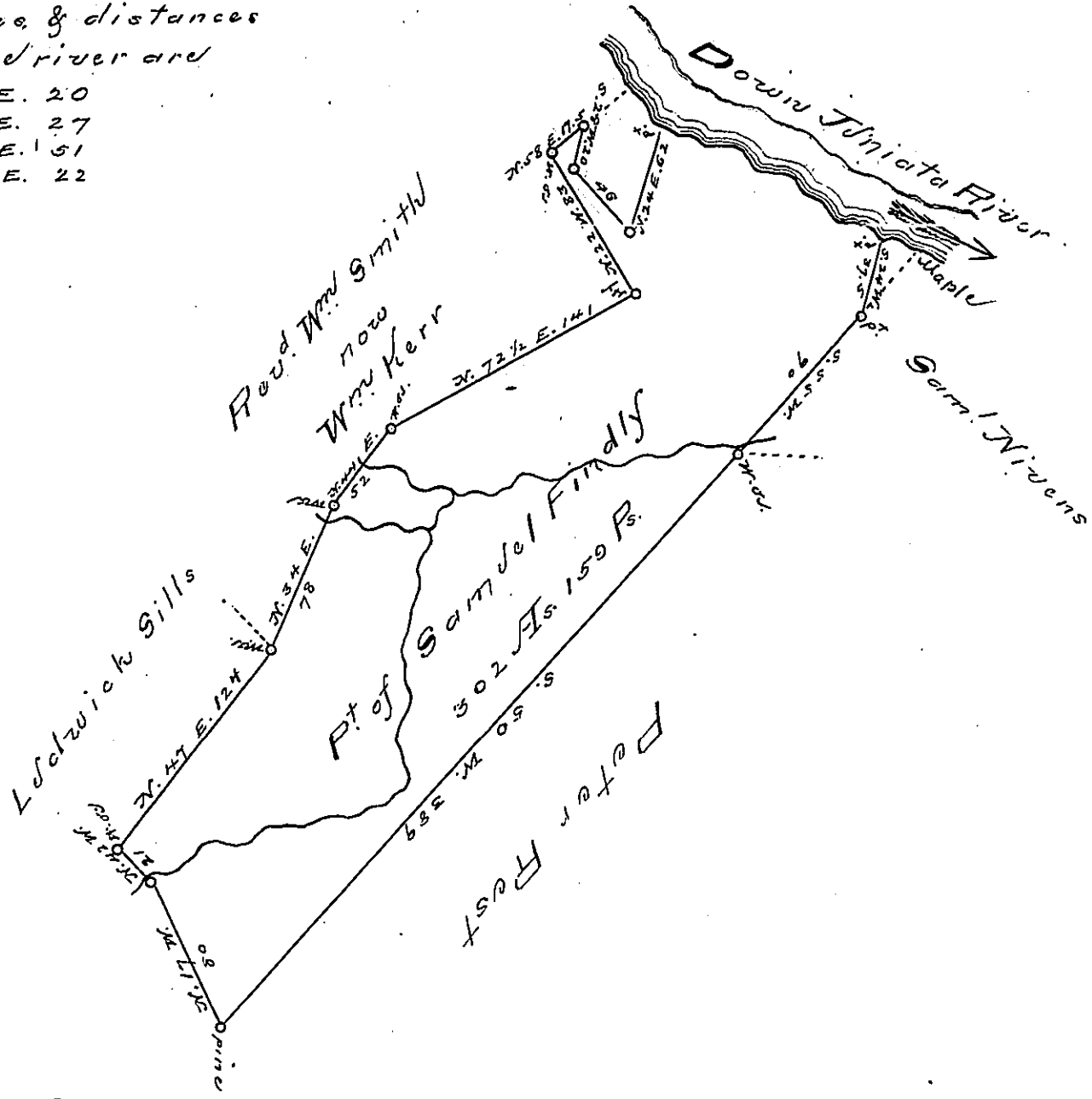


The Courses & distances  
Down the river are

- S. 50 E. 20
- S. 56 E. 27
- S. 46 E. 51
- S. 68 1/2 E. 22



Situate in Lower Walker Township  
Huntingdon County containing three  
hundred two acres 159 perches.

Being part of a tract of 316 Acres 132 perches  
& allowance which was surveyed in pursuance  
of a Warrant granted to Samuel Findley  
dated the 1<sup>st</sup> day of June 1762

This part Reexamined & Divided from the  
residue of said tract the 1<sup>st</sup> of July 1831.

Jacob Maugler Esq. }  
Surveyor General } Peter Wood Esq. Sec.

IN TESTIMONY that the above is a copy of the original remaining on file in the  
Department of Internal Affairs of Pennsylvania, made con-  
formably to an Act of Assembly approved the 16th day of  
February, 1833, I have hereunto set my Hand and caused  
the Seal of said Department to be affixed at Harrisburg, this

— twentieth — day of February — 1895.

*Roac B. Brown*  
Secretary of Internal Affairs.